

# Welcome

---

## **Devolution and local government reorganisation**

19 June 2025



Not an LBV member,  
scan to join....



# **Robin Pointon**

---

**LBV Board Director**

**&**

**Founder of Go Travel Solutions**

**[robin.pointon@go-travel-solutions.com](mailto:robin.pointon@go-travel-solutions.com)**



# Sue Tilley

---

**LBV Chair**

**&**

**Founder of Sue Tilley Associates Ltd**

**[sue@suetilleyassociates.co.uk](mailto:sue@suetilleyassociates.co.uk)**

# Agenda

**12:30 Welcome**

from LBV Board Director, Robin Pointon

**12:35 Introduction**

from LBV Chair, Sue Tilley

**12:40 Presentation**

by Sir Peter Soulsby - City Mayor, Leicester City Council

**12:50 Presentation**

by Cllr Dan Harrison – Leader of Leicestershire County Council

**13:00 Presentation**

by Cllr Pip Allnatt – Leader of Melton Borough Council

**13:10 Q&A**

**13:30 Networking**

**14:00 Event close**



# **Sir Peter Soulsby**

---

**City Mayor**  
**Leicester City Council**

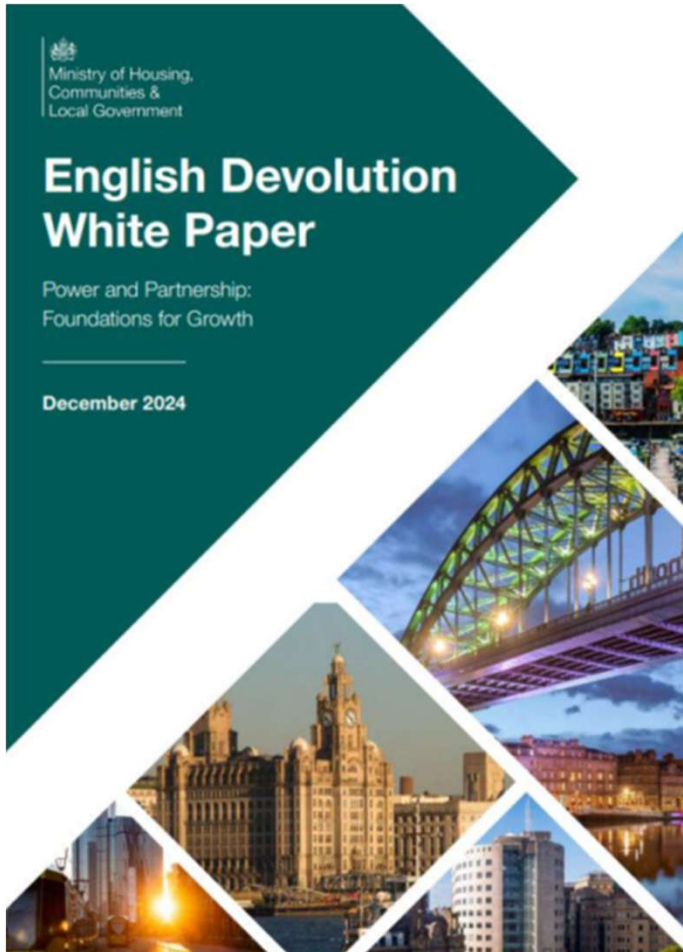
# Devolution and local government reorganisation

---

Leicestershire Business  
Voice

19 June 2025





# Local government reorganisation

- In two tier areas
- For unitary councils where size and boundaries hinder delivery of sustainable services
- To unlock devolution – a strategic authority with elected mayor, covering region of 1.5m+ people

## **Proposals should consider**

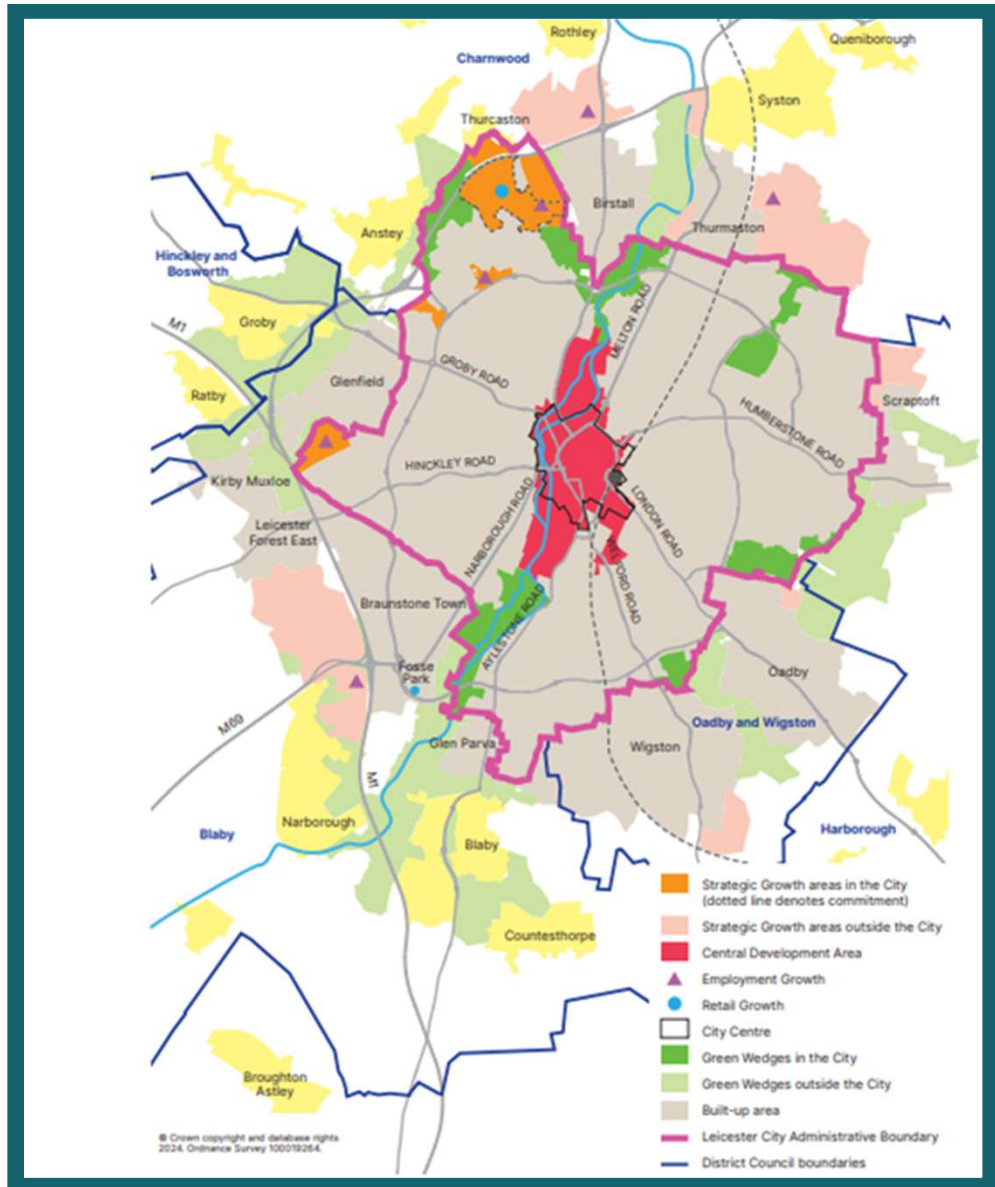
- **Population of 500,000 or more**
- **Sensible geography**
- **Sensible economic areas**
- **Improvement to local services**
- **Efficiency savings**
- **Local identity, and cultural and historic importance**
- **Support to devolution**

## **What the Government asked for**

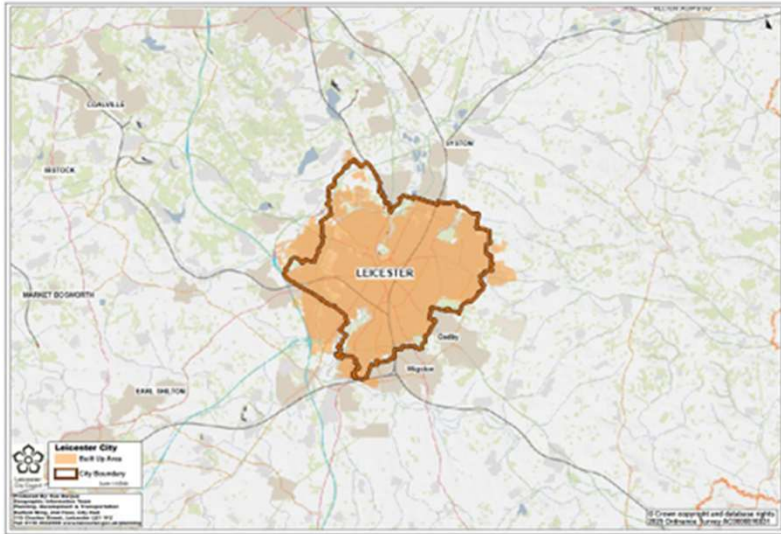


## Existing city boundary

- Accident of history
- Illogical boundaries
- Heavily constrained – housing, employment land
- Constrained financially – low tax base
- Inefficient service delivery – waste collection, highway maintenance, education



# City boundaries – comparison

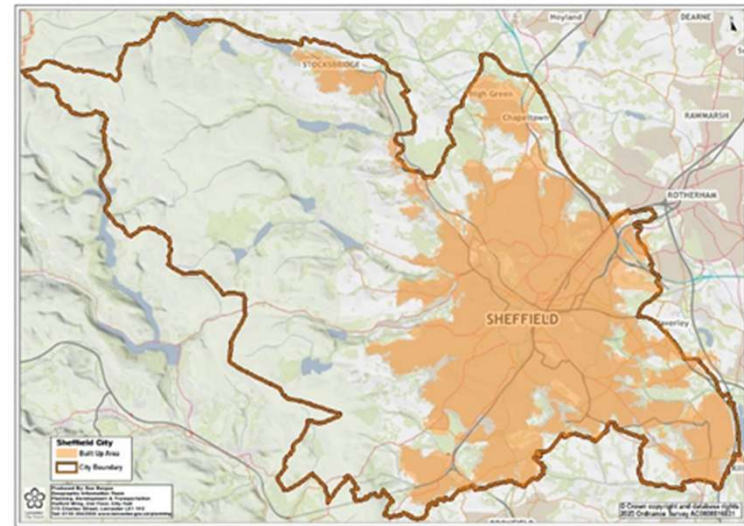


## Leicester

Population: 372k

Area km<sup>2</sup>: 73

Population density  
pop'n/ km<sup>2</sup>: **5095**



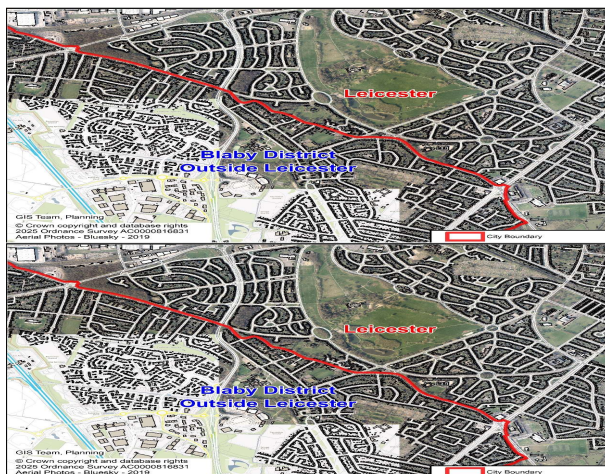
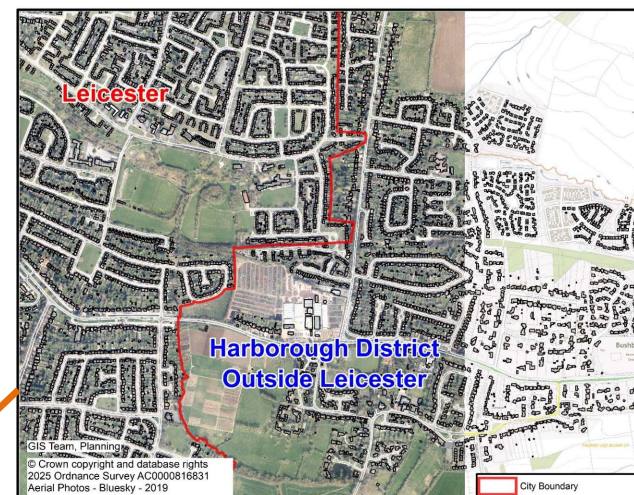
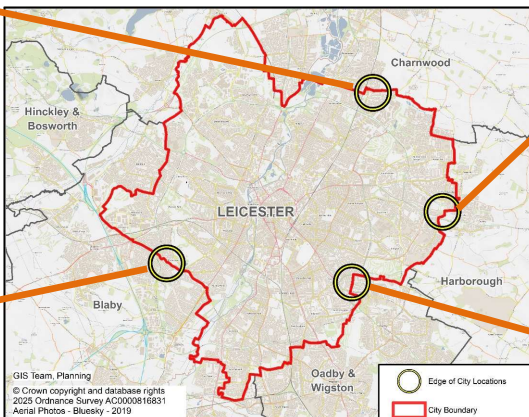
## Sheffield

Population: 564k

Area km<sup>2</sup>: 367

Population density  
pop'n/ km<sup>2</sup>: **1540**

# Illogical city boundary: examples



# City council's proposal

- ✓ Resolves the city's boundary constraints
- ✓ Identifies a sensible geographical boundary for Leicester
- ✓ Meets the city's need for housing and employment land
- ✓ Gives 500k+ population per unitary
- ✓ Delivers a sensible economic area
- ✓ Simple, easily understood and cost-effective
- ✓ Creates a stable and sustainable financial position for the city council

## Next steps



**Discussion with  
other councils**



**Further detailed  
analysis**



**Ongoing  
engagement and  
review**



**Final submission  
to Government by  
28 Nov**



# **Cllr Dan Harrison**

---

## **Leader of Leicestershire County Council**



# **Cllr Pip Allnatt**

---

## **Leader of Melton Borough Council**



**NORTH**  
**CITY**  
**SOUTH**

# **Devolution & LGR Update: A District & Rutland Councils perspective**

North, City, South: Big Enough to Deliver, Close Enough to Respond

# Councils are changing

## **Have your say**

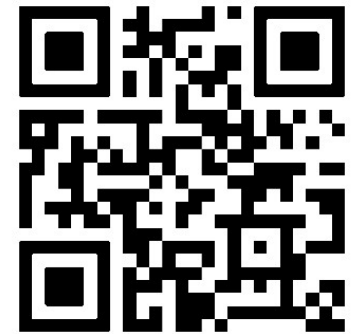
Useful Links:



North City South  
Homepage



Get involved  
Provide your views



Our Interim Plans

# Who are we?

- **7 Leicestershire District and Borough Councils, and Rutland County Council**
- **Together we serve over 750,000 people**
- **Cross-party group – Conservative, Labour, Liberal Democrats, Independents**
- **8 councils working together on a once in a generation opportunity**

# **Devolution**

## **Mayoral Strategic Authority (MSA)**

### **Leicester, Leicestershire & Rutland**



## **Unitary Council(s)**



# **Local Government Reorganisation (LGR)**

# Why Devolution matters?

- Government wants regional **Mayors** and **Devolution Agreements** across whole country
- Confirmed set of **funding and powers** to be devolved:
  - Transport and infrastructure
  - Skills and employment support
  - Housing and strategic planning
  - Economic development and regeneration
  - Climate change
  - Health and Wellbeing
- Delivered through a **new regional strategic authority**
- **Advocacy and a national voice** for Leicester, Leicestershire and Rutland - New Mayor will have a seat at the Council of Nations and Regions



**The interplay between the new strategic authorities and new unitary councils will be crucial to success**

# So why North, City, South?

## And what it means for business....

- Our plan seeks to **progress with Devolution at the same time as LGR**  
– **unlock devolution quickly** – more funding and powers!
- 3 balanced unitary councils creates **more coherent relationships with the Mayoral Strategic Authority** across LLR
- **Ensures the right balance** between scale and physical geography  
– big enough to deliver, close enough to respond
- **Protects the Neighbourhood Working model** – no one size fits all, more tailored, more responsive – maintaining **key relationships!**
- **Strong local support** from initial engagement

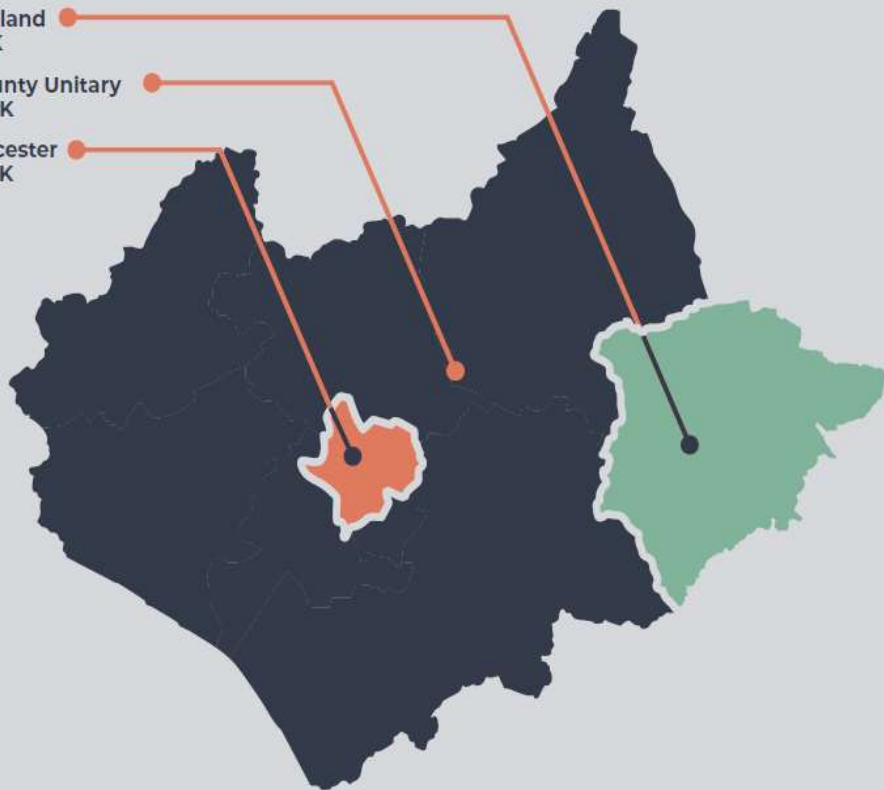
## County Unitary & Leicester

Strategic Authority  
1,191K

Rutland  
43K

County Unitary  
775K

Leicester  
373K



Vs

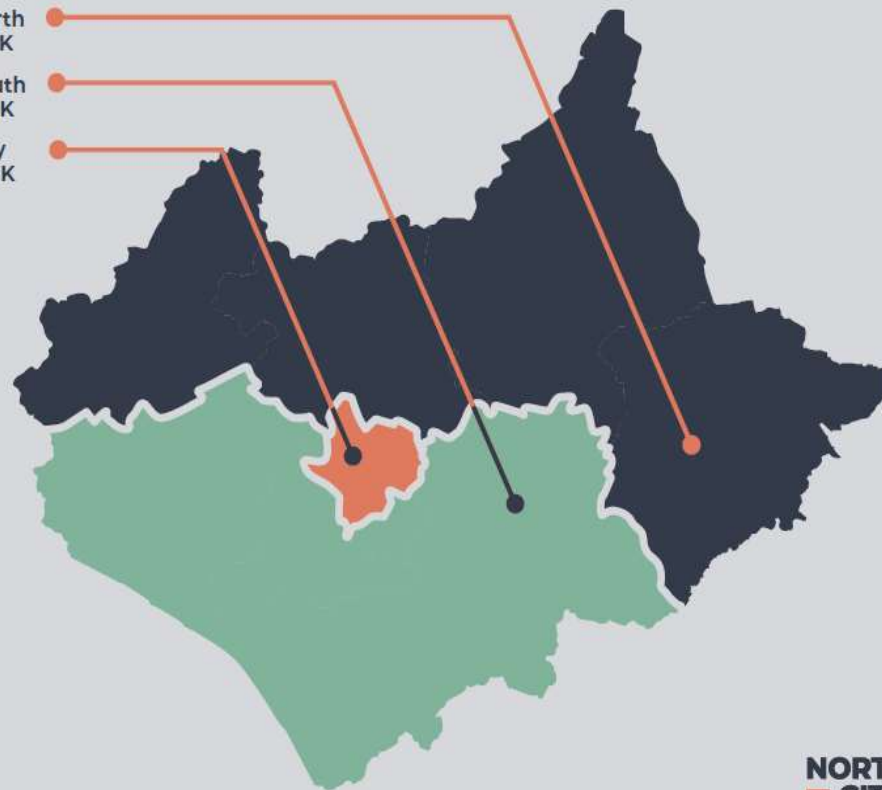
## North, City, South

Strategic Authority  
1,191K

North  
418K

South  
401K

City  
373K



NORTH  
CITY  
SOUTH

# Next Steps

- **Government feedback** received on 3<sup>rd</sup> June
- Government reiterated importance of **financial sustainability** and providing assurance re service transition
- **We are keen to work proactively** with County and City Council and see if can build more consensus
- We are happy to work with City on resolving financial challenges and reasonable boundary changes – **but approach must be right for the whole of LLR**
- **This is a once in a generation opportunity.** It cannot be just about cost savings – **this is an opportunity to reset, reinvigorate and reimagine public services.**

# We want to hear from you:

- Final proposals due November – help ensure it delivers for business
- Commissioned Opinion Research Services (ORS) – independent collection and analysis of opinions to inform LGR proposals
- Visit [www.northcitysouth.co.uk](http://www.northcitysouth.co.uk) for more info
- Various ways to get involved:
  - Questionnaire – printed / online
  - Business focus groups
  - One to one interviews
- Please get involved and help us shape the future

# Councils are changing

## **Have your say**

Useful Links:



North City South  
Homepage



Get involved  
Provide your views



Our Interim Plans

# Q&A

---

# Thank You

## A BIG THANK YOU TO:

### ☐ Our amazing guest speakers

- **Sir Peter Soulsby**
- **Cllr Dan Harrison**
- **Cllr Pip Allnatt**



### ☐ Friars Mill for hosting

### ☐ YOU for your ongoing support of LBV

Presentation slides and useful links available at [www.lbv.co.uk/events](http://www.lbv.co.uk/events)

# LBV Membership

---

**If you've not yet signed up to become a member of LBV's growing network for businesses in Leicester and Leicestershire, you can apply to join (for a 12-month membership) at:**

**[www.lbv.co.uk/membership](http://www.lbv.co.uk/membership)**

# And finally... our next event

## DIVERSITY AND INCLUSION IN BUSINESS

8 July 2025, 12:00pm – 2pm

DMU Innovation Centre, 49 Oxford St, Leicester, LE1 5XY

In collaboration with De Montfort University, exploring the importance and incredible advantages of having a diverse workforce.

Experts exploring a variety of growth pathways:

- Benefits & Business Growth
- Strategies & Solutions
- Future Outlook & Action



**Thank you.  
Have a great day!**

---

**For more information on LBV, visit  
[www.lbv.co.uk](http://www.lbv.co.uk)**